

---

# PR 756 Litronic

---

## LIEBHERR

Crawler Tractors



**Generation**  
8

**Operating weight**  
35.4 – 43.0 tonnes  
39.0 – 47.4 tons

**Engine output**  
SAE J1349 / ISO 9249  
260 kW / 349 HP  
260 kW / 353 HP  
Stage V / Tier 4f

**Standard blades**  
Semi-U Blade 8.92 m<sup>3</sup> / 11.67 yd<sup>3</sup>  
U Blade 11.8m<sup>3</sup> / 15.43 yd<sup>3</sup>



# Technical data



## Engine

<b>Liebherr Diesel engine</b>	D 946 A7 Emission regulations according to 97/68/EC, stage V, EPA/CARB Tier 4f
<b>Rated power (net)</b> ISO 9249 SAE J1349	260 kW / 353 HP 260 kW / 349 HP
<b>Maximum power (net)</b> ISO 9249 SAE J1349	275 kW / 374 HP 275 kW / 369 HP
<b>Rated speed</b>	1,600 rpm
<b>Displacement</b>	12 l / 733 in <sup>3</sup>
<b>Design</b>	6 cylinder in-line engine, water-cooled, turbocharged, air-to-air intercooler
<b>Injection system</b>	Direct fuel injection, Common Rail, electronic control
<b>Lubrication</b>	Pressurised lube system, engine lubrication guaranteed for inclinations up to 45°, on all sides
<b>Operating voltage</b>	24 V
<b>Alternator</b>	140 A
<b>Starter</b>	7.8 kW / 11 HP
<b>Batteries</b>	4 x 95 Ah / 12 V
<b>Air cleaner</b>	Dry type air filter with vacuum indicator and automatic dust ejector, main and safety element
<b>Cooling system</b>	Combi radiator, comprising radiators for water and charge air. Hydrostatic fan drive



## Hydraulics

<b>Hydraulic system</b>	Load sensing (demand-controlled)
<b>Pump type</b>	Swash plate piston pump
<b>Pump flow, max.</b>	256 l/min. / 67.6 gpm / 56.3 Imp.gpm
<b>Pressure limitation</b>	260 bar / 3,770 psi
<b>Control valve</b>	2 segments, expandable to 4
<b>Filter system</b>	Return filter with magnetic rod in the hydraulic tank
<b>Control</b>	Single joystick for all blade functions



## Travel drive

<b>Transmission system</b>	Infinitely variable hydrostatic travel drive, independent drive for each track
<b>Travel speed *</b> Speed range 1: Speed range 2: Speed range 3:	Continuously variable 0 – 4.0 km/h / 2.5 mph (forward & reverse) 0 – 6.0 km/h / 3.7 mph (forward & reverse) 0 – 11.0 km/h / 6.8 mph (forward & reverse) * Travel speed ranges can be set on the travel joystick (memory function)
<b>Electronic system</b>	The electronic system automatically adjusts travel speed and drawbar pull to match changing load conditions
<b>Steering</b>	Hydrostatic
<b>Service brake</b>	Hydrostatic (self-locking), wear-free
<b>Parking brake</b>	Multi-disc brake, wear-free, automatically applied with neutral joystick position
<b>Cooling system</b>	Separate oil cooler, hydraulic fan drive
<b>Filter system</b>	Micro cartridge filter in replenishing circuit
<b>Final drive</b>	Combination spur gear with planetary gear, double-sealed (duo cone seals) with temperature indicator
<b>Control</b>	Single proportional joystick for all travel and steering functions



## Operator's cab

<b>Cab</b>	Hydro-elastic mounted cab with positive pressure ventilation, can be tilted with hand pump 40° to the rear. With integrated ROPS Rollover Protective Structure (EN ISO 3471) and FOPS Falling Objects Protective Structure (EN ISO 3449)
<b>Operator's seat</b>	Air suspended comfort seat, fully adjustable
<b>Monitoring</b>	Touch screen: display of current machine information, automatic monitoring of operating conditions, individual setting of machine parameters
<b>Vibration emission</b> Hand / arm vibrations Whole-body vibrations	< 2.5 m/s <sup>2</sup> , according with ISO 5349-1:2001 0.24 – 1.31 m/s <sup>2</sup> , complies with technical report ISO/TR 25398:2006
<b>Measuring inaccuracy</b>	According with standard EN 12096:1997

## Undercarriage

	Standard	LGP
<b>Design</b>	Undercarriage with rigid bottom rollers or bogie suspension or oscillating idler	
<b>Mounting</b>	Via separate pivot shafts and equalizer bar	
<b>Track chains</b>	Lubricated, single grouser shoes, tensioning via steel spring and grease tensioner	
<b>Links, each side</b>	44	44
<b>Track rollers, each side</b>	7	7
<b>Carrier rollers, each side</b>	2	2
<b>Sprocket segments, each side</b>	5	5
<b>Track shoes, standard</b>	610 mm / 24"	914 mm / 3"
<b>Track shoes, optional</b>	560 mm / 22", 711 mm / 28"	965 mm / 3'2"

## Sound levels

<b>Operator sound exposure ISO 6396</b>	
<b>L<sub>PA</sub></b> (in the cab)	75 dB(A)
<b>Exterior sound pressure 2000 / 14 / EC</b>	
<b>L<sub>WA</sub></b> (to the environment)	113 dB(A)

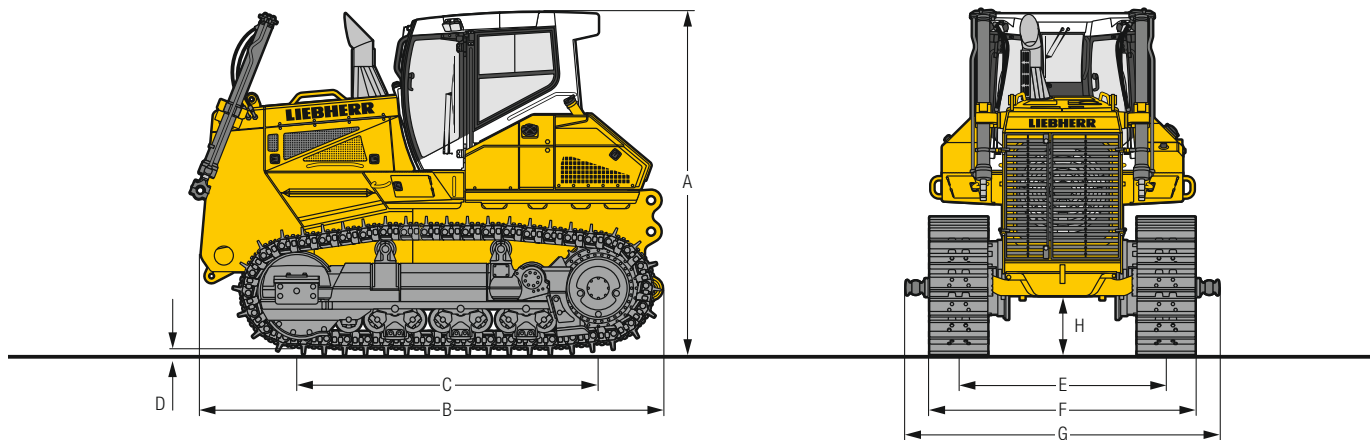
## Refill capacities

<b>Cooling system</b>	55 l / 14.5 gal / 12.1 Imp.gal
<b>Diesel Exhaust Fluid (DEF) tank</b>	80 l / 21.1 gal / 17.6 Imp.gal
<b>Engine oil, with filters</b>	43 l / 11.4 gal / 9.5 Imp.gal
<b>Final drive LGP, each side</b>	26 l / 6.9 gal / 5.7 Imp.gal
<b>Final drive Standard, each side</b>	20 l / 5.3 gal / 4.4 Imp.gal
<b>Fuel tank</b>	660 l / 174.2 gal / 145.2 Imp.gal
<b>Hydraulic tank</b>	129 l / 34.1 gal / 28.4 Imp.gal
<b>Splitter box</b>	8.5 l / 2.2 gal / 1.9 Imp.gal

## Drawbar pull

<b>Max.</b>	592 kN
<b>at 1.5 km/h / 0.9 mph</b>	522 kN
<b>at 3.0 km/h / 1.9 mph</b>	261 kN
<b>at 6.0 km/h / 3.7 mph</b>	133 kN
<b>at 9.0 km/h / 5.6 mph</b>	89 kN

# Dimensions

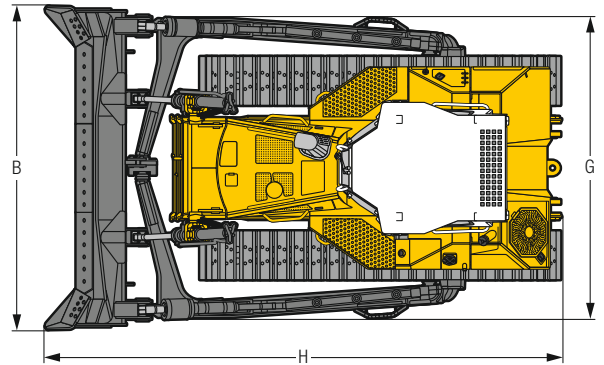
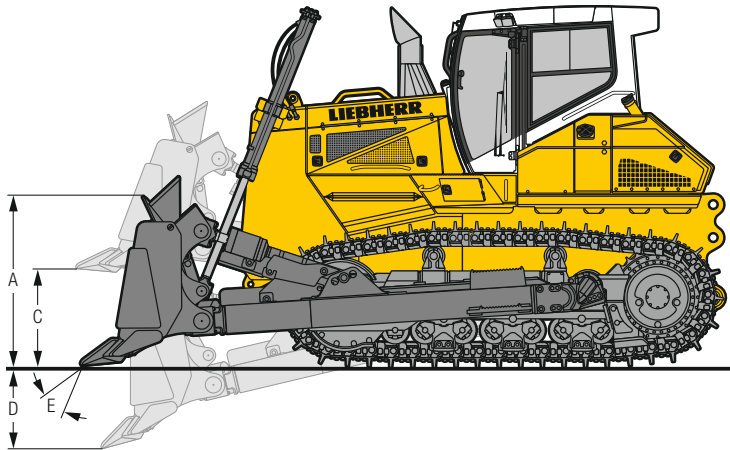


## Dimensions

Undercarriage		Standard rigid bottom rollers	Standard bogie suspension	Standard oscillating idler double bogie suspension	LGP rigid bottom rollers
<b>A Height over cab</b>	mm	3,610		3,610	3,610
	ft in	11'10"		11'10"	11'10"
<b>B Overall length without attachments</b>	mm	4,885		4,885	4,885
	ft in	16'0"		16'0"	16'0"
<b>C Length of track on ground</b>	mm	3,174		3,249	3,174
	ft in	10'5"		10'8"	10'5"
<b>D Height of grousers</b>	mm	83		83	83
	ft in	3.27"		3.27"	0'3"
<b>H Ground clearance</b>	mm	635		644	635
	ft in	2'1"		2'1"	2'1"
<b>E Track gauge</b>	mm	2,180		2,180	2,430
	ft in	7'2"		7'2"	8'
<b>G Width over trunnions</b>	mm	3,145		3,145	3,575
	ft in	10'4"		10'4"	11'9"
<b>F Track shoes 560 mm / 22"</b>					
Width over tracks	mm / ft in	2,740 / 9'	2,740 / 9'	2,740 / 9'	-
Tractor shipping weight <sup>1)</sup>	kg / lb	29,106 / 64,168	30,033 / 66,211	31,067 / 68,491	
<b>F Track shoes 610 mm / 24"</b>					
Width over tracks	mm / ft in	2,790 / 9'2"	2,790 / 9'2"	2,790 / 9'2"	-
Tractor shipping weight <sup>1)</sup>	kg / lb	29,346 / 64,697	30,273 / 66,740	31,307 / 69,020	
<b>F Track shoes 711 mm / 28"</b>					
Width over tracks	mm / ft in	2,891 / 9'6"	2,891 / 9'6"	2,891 / 9'6"	-
Tractor shipping weight <sup>1)</sup>	kg / lb	29,823 / 65,748	30,750 / 67,792	31,784 / 70,072	
<b>F Track shoes 914 mm / 3"</b>					
Width over tracks	mm / ft in	-	-	-	3,344 / 11'
Tractor shipping weight <sup>1)</sup>	kg / lb				30,866 / 68,048
<b>F Track shoes 965 mm / 3'2"</b>					
Width over tracks	mm / ft in	-	-	-	3,395 / 11'2"
Tractor shipping weight <sup>1)</sup>	kg / lb				31,343 / 69,099

<sup>1)</sup> Including coolant and lubricants, 20% fuel, ROPS / FOPS cab.

# Front attachments



## Semi-U blade

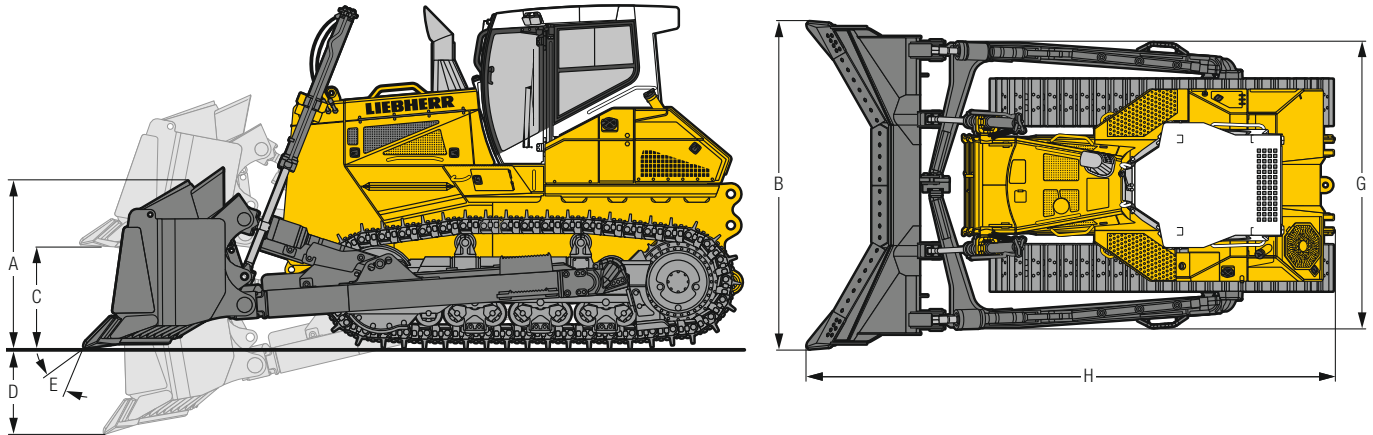
Undercarriage		Standard rigid bottom rollers	Standard bogie suspension	Standard oscillating idler double bogie suspension	LGP rigid bottom rollers
Blade capacity, ISO 9246	m <sup>3</sup> yd <sup>3</sup>	8.92 11.67		8.92 11.67	9.46 12.37
A Height of blade	mm ft in	1,650 5'5"		1,650 5'5"	1,600 5'3"
B Width of blade	mm ft in	4,044 13'3"		4,044 13'3"	4,465 14'8"
C Lifting height <sup>3)</sup>	mm ft in	1,372 4'6"		1,381 4'6"	1,403 4'7"
D Digging depth <sup>3)</sup>	mm ft in	570 1'10"		561 1'10"	563 1'10"
E Blade pitch adjustment		10°		10°	2)
Max. blade tilt	mm ft in	993 3'3"		993 1'10"	481 1'7"
G Width over push frame	mm ft in	3,767 12'4"		3,767 12'5"	4,193 13'9"
H Overall length	mm ft in	6,449 21'2"		6,449 21'2"	6,452 21'2"
F Track shoes 560 mm / 22"					
Operating weight <sup>1)</sup>	kg / lb	35,388 / 78,017	36,315 / 80,061	37,349 / 81,679	-
Ground pressure, ISO16754 <sup>1)</sup>	kg/cm <sup>2</sup> / psi	0.87 / 12.37	0.89 / 12.66	0.90 / 12.8	
F Track shoes 610 mm / 24"					
Operating weight <sup>1)</sup>	kg / lb	35,628 / 78,546	36,555 / 79,928	37,589 / 78,385	-
Ground pressure, ISO16754 <sup>1)</sup>	kg/cm <sup>2</sup> / psi	0.80 / 11.38	0.82 / 11.66	0.83 / 11.8	
F Track shoes 711 mm / 28"					
Operating weight <sup>1)</sup>	kg / lb	36,105 / 79,598	37,032 / 80,980	38,066 / 81,641	-
Ground pressure, ISO16754 <sup>1)</sup>	kg/cm <sup>2</sup> / psi	0.70 / 9.96	0.71 / 10.1	0.72 / 10.24	
F Track shoes 914 mm / 3"					
Operating weight <sup>1)</sup>	kg / lb	-	-	-	37,170 / 81,946
Ground pressure, ISO16754 <sup>1)</sup>	kg/cm <sup>2</sup> / psi				0.56 / 7.96
F Track shoes 965 mm / 3'2"					
Operating weight <sup>1)</sup>	kg / lb	-	-	-	37,410 / 82,475
Ground pressure, ISO16754 <sup>1)</sup>	kg/cm <sup>2</sup> / psi				0.53 / 7.54

<sup>1)</sup> Including coolant and lubricants, 100% fuel, ROPS/FOPS cab, semi-U blade, operator.

<sup>2)</sup> Mechanical blade pitch adjustment.

<sup>3)</sup> The indicated dimensions include the height of the grouser shoe.

# Front attachments



## U-Blade

Undercarriage		Standard rigid bottom rollers	Standard bogie suspension	Standard oscillating idler double bogie suspension
Blade capacity, ISO 9246	m <sup>3</sup> yd <sup>3</sup>	11.8 15.43		11.8 15.43
A Height of blade	mm ft in	1,700 5'7"		1,700 5'7"
B Width of blade	mm ft in	4,281 14'1"		4,281 14'1"
C Lifting height <sup>2)</sup>	mm ft in	1,361 4'6"		1,370 4'6"
D Digging depth <sup>2)</sup>	mm ft in	565 1'10"		556 1'10"
E Blade pitch adjustment		10°		10°
Max. blade tilt	mm ft in	1,052 3'5"		1,052 3'5"
G Width over push frame	mm ft in	3,767 12'4"		3,767 12'4"
H Overall length	mm ft in	6,872 22'7"		6,872 22'7"
F Track shoes 560 mm / 22"				
Operating weight <sup>1)</sup>	kg / lb	35,358 / 77,951	36,285 / 79,995	37,319 / 82,274
Ground pressure, ISO16754 <sup>1)</sup>	kg/cm <sup>2</sup> / psi	0.87 / 12.37	0.89 / 12.66	0.90 / 12.80
F Track shoes 610 mm / 24"				
Operating weight <sup>1)</sup>	kg / lb	35,598 / 78,480	36,525 / 80,524	37,559 / 82,803
Ground pressure, ISO16754 <sup>1)</sup>	kg/cm <sup>2</sup> / psi	0.80 / 11.38	0.82 / 11.66	0.83 / 11.80
F Track shoes 711 mm / 28"				
Operating weight <sup>1)</sup>	kg / lb	36,075 / 79,532	37,002 / 81,575	38,036 / 83,855
Ground pressure, ISO16754 <sup>1)</sup>	kg/cm <sup>2</sup> / psi	0.68 / 9.67	0.71 / 10.1	0.72 / 10.24

<sup>1)</sup> Including coolant and lubricants, 100% fuel, ROPS/FOPS cab, U-Blade, operator.

<sup>2)</sup> The indicated dimensions include the height of the grouser shoe.

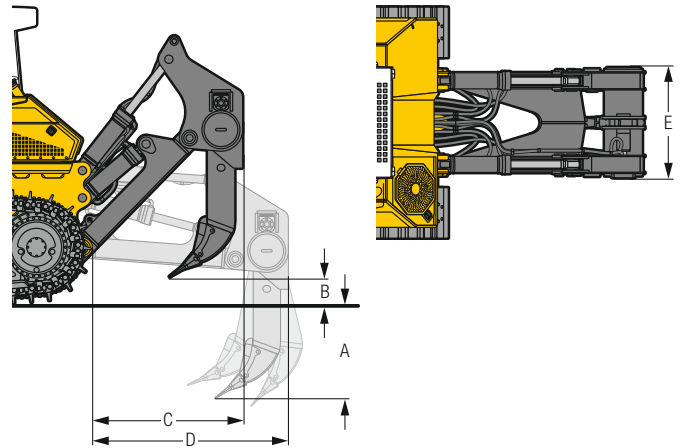
# Rear attachments



## 1-Shank ripper

Parallelogram		hydraulic pitch adjustment	
A Ripping depth (max. / min.)	mm	1,203 / 423	
	ft in	3'11" / 1'5"	
B Lifting height (max. / min.)	mm	1,040 / 260	
	ft in	3'5" / 0'10"	
C Additional length, attachment raised	mm	1,820	
	ft in	6'	
D Additional length, attachment lowered	mm	2,373	
	ft in	7'9"	
E Overall beam width	mm	1,370	
	ft in	4'6"	
F Distance between shanks		-	
Max. pitch adjustment		31°	
Max. penetration force	kN	123.9	
	lbf	27,854	
Max. pryout force	kN	208.8	
	lbf	46,940	
Weight	kg	3,638	
	lb	8,020	

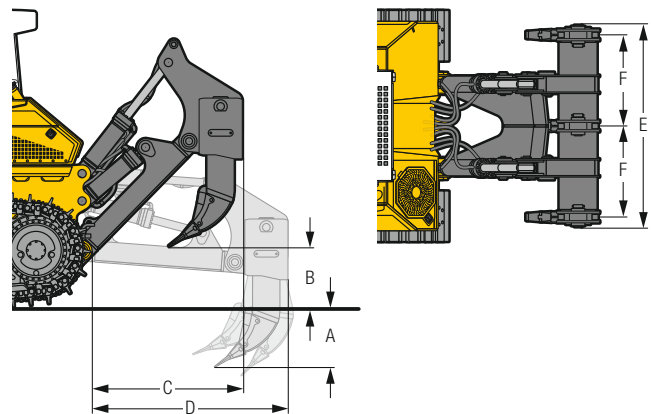
The indicated dimensions include the height of the grouser shoe.



## 3-Shank ripper

Parallelogram		hydraulic pitch adjustment	
A Ripping depth (max. / min.)	mm	796 / 481	
	ft in	2'7" / 1'7"	
B Lifting height (max. / min.)	mm	982 / 667	
	ft in	3'3" / 2'2"	
C Additional length, attachment raised	mm	1,820	
	ft in	6'	
D Additional length, attachment lowered	mm	2,373	
	ft in	7'9"	
E Overall beam width	mm	2,434	
	ft in	8'	
F Distance between shanks		1,100	
Max. pitch adjustment		31°	
Max. penetration force	kN	131.8	
	lbf	29,630	
Max. pryout force	kN	208.8	
	lbf	46,940	
Weight	kg	4,821	
	lb	10,628	

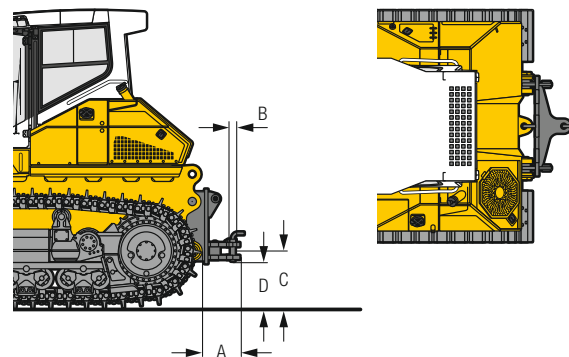
The indicated dimensions include the height of the grouser shoe.



## Drawbar

		rigid	
A Additional length	mm	463	
	ft in	1'6"	
B Socket pin diameter	mm	60	
	ft in	2.36"	
C Height of jaw	mm	629	
	ft in	2'1"	
D Ground clearance	mm	506	
	ft in	1'8"	
Jaw opening	mm	105	
	ft in	4.13"	
Weight	kg	576	
	lb	1,270	

The indicated dimensions include the height of the grouser shoe.



# Equipment



## Base machine

Additional handle on treadplate	•
Air filter with automatic dust ejector	+
Air filter, dry type, dual step, with pre-filter	•
Air pre-cleaner Sy-Klone	+
Air pre-cleaner Top Air	+
Auto Idle	+
Automatic blade stabilization + inclination control	•
Automatic engine shut-off	+
Battery compartment, lockable	•
Coal arrangement	+
Cold environment arrangement	+
Cooling fan front, hinged	+
Cooling fan, hydraulically driven	•
Cooling fan, reversible	+
DEF tank lockable	•
Engine compartment doors, lockable	•
Engine compartment lighting	•
Forestry arrangement	+
Fuel pre-filter with water separator	•
Fuel pre-filter with water separator heatable	+
Grade control ready kit	1)
LiDAT – Data transmission system	•
Liebherr diesel engine emission stage V / Tier 4f	•
Liebherr hydraulic oil, biologically degradable	+
Radiator, hinged	•
Radiator, wide-meshed	•
Refuelling pump, electric	+
Roof mounted grading system	+
Spade with mounting bracket	+
Special paint scheme	+
Tool kit, basic	•
Tool kit, extended	+
Towing hitch rear	•
Towing lug front	•
Towing lug rear	+
Wastehandling arrangement	+
Woodchip arrangement	1)



## Hydraulics system

Automatic lifting of the ripper into the parking position	•
Blade float function	•
Blade quick drop function	•
Blade shake feature	•
Control block for 2 circuits	•
Electronic control of working hydraulics	•
Hydraulic kit for ripper	+
Hydraulic kit for winch	+
Hydraulic pitch angle adjustment	+
Oil filter in hydraulic tank	•
Variable flow pump, load-sensing	•



## Travel drive

Emergency stop	•
Final drives planetary gear	•
Inching brake pedal	•
Load limit control, electronic	•
Machine-release switch	•
Parking brake, automatic	•
Seat contact switch	•
Travel control, 3 speed ranges	•
Travel drive joystick, detented	+
Travel drive joystick, proportional	•
Travel drive, hydrostatic	•



## Operator's cab

Access and exit step lighting	•
Armrests 3D adjustable	•
Automatic climate control	•
Coat hook	•
Dome light LED	•
Dust filter system pressurised	+
Fire extinguisher	+
Footrest on the right side of the front console	+
Joysticks, longitudinally adjustable	•
Noise-absorbing cab mounts	•
Operator's seat Comfort, air-suspended with seat heating	•
Operator's seat Premium, air-suspended with seat heating and cooling	+
Pressurised cab	•
Protective grid for rear window	+
Radio	+
Radio preparation kit	+
Rear-view camera	+
Rear-view mirror, inside	•
Rear-view mirrors, outside	+
ROPS / FOPS integrated	•
Safety glass	•
Sliding window left	+
Sliding window right	+
Socket 12 V + 24 V	•
Storage nets	+
Stowage compartment, air-conditioned	•
Sun visor, front	+
Tilttable cab	•
Touch-controlled colour display	•
Windshield washer system	•
Windshield wipers front, rear, doors, with intermittent function	•

• = Standard

+ = Option

1) on demand at your dealer



# Equipment



## Electric system

1 additional working light on each lift cylinder	+
1 additional working light on ripper	+
1 working light on each lift cylinder	•
2 additional working light on the cab, rear	+
2 batteries cold start	•
2 working lights on the cab, rear	•
4 working light on the cab, front	•
All working lights in LED version	+
Amber beacon	+
Back-up alarm with broadband signal	+
Back-up alarm with broadband signal and visual	+
Back-up alarm, acoustic	+
Back-up alarm, acoustic and visual	+
Battery main switch	•
Battery main switch, lockable	+
Horn	•
Immobiliser, electronic	+
On-board voltage 24 V	•



## Front attachments

Mechanical angle blade	+
Semi-U blade	+
Spill plate	+
Trash rack	+
U blade	+
Wear plates on push frame	+
Wear plates on semi-U blade	+



## Rear attachments

Counterweight, rear (4,000 kg / 8,818 lb)	+
Drawbar rear, rigid	+
Mounting plate for third-party equipment	+
Ripper, 1 shank with pin puller	+
Ripper, 3 shank	+
Winch	+



## Undercarriage

Master link, two-piece	•
Sprocket segments with recesses	+
Sprocket segments, bolted	•
Track frame, closed	•
Track guard, full length	+
Track guide centre part	+
Track guide, front and rear	•
Track pads with mud holes <sup>1)</sup>	+
Track shoes, heavy duty	•
Tracks, oil-lubricated	•
Undercarriage LGP	+
Undercarriage standard	+
Undercarriage with bogie suspension	+
Undercarriage with double bogie suspension and oscillating idlers	+
Undercarriage with rigid bottom rollers	•

• = Standard

+ = Option

<sup>1)</sup> available track shoes on demand at your dealer

Options and/or special attachments, supplied by vendors other than Liebherr, are only to be installed with the knowledge and approval of Liebherr in order to retain warranty.

# The Liebherr group of companies



## Diverse Product Range

The Liebherr Group is one of the largest construction equipment manufacturers in the world. Liebherr's quality products and services hold a high reputation in many industries. The wide range includes domestic appliances, aerospace and transportation systems, machine tools and maritime cranes.

## Exceptional Customer Benefit

Every product line provides a complete range of models in many different versions. With both their technical excellence and superior quality, Liebherr products offer customers the highest benefits in practical applications.

## State-of-the-art Technology

Liebherr attributes great importance to the product areas of core technology and components, in order to achieve its consistent, top-quality products. Important modules and components are developed and manufactured in-house, for instance, the entire drive and control technology for the construction equipment and mining trucks.

## Worldwide and Family-Owned

Hans Liebherr founded the Liebherr family company in 1949. Since that time, the enterprise has steadily grown to a group of more than 140 companies with nearly 48,000 employees located on all continents. The corporate headquarters of the Group is Liebherr-International AG in Bulle, Switzerland. The Liebherr family is the sole owner of the company.

[www.liebherr.us](http://www.liebherr.us)

## WARNING

Breathing diesel engine exhaust exposes you to chemicals known to the State of California to cause cancer and birth defects or other reproductive harm.

- Always start and operate the engine in a well-ventilated area.
- If in an enclosed area, vent the exhaust to the outside.
- Do not modify or tamper with exhaust system.
- Do not idle the engine except as necessary.

For more information go to [www.P65warnings.ca.gov/diesel](http://www.P65warnings.ca.gov/diesel).

## WARNING

This product can expose you to chemicals including lead and lead compounds, which are known to the State of California to cause cancer and birth defects or other reproductive harm.

For more information go to [www.P65warnings.ca.gov](http://www.P65warnings.ca.gov).

## Liebherr-Werk Telfs GmbH

Hans-Liebherr-Straße 35 • 6410 Telfs, Austria • Phone +43 50809 6-100 • Fax +43 50809 6-7772  
[lwt.marketing@liebherr.com](mailto:lwt.marketing@liebherr.com) • [www.liebherr.com](http://www.liebherr.com) • [www.facebook.com/LiebherrConstruction](https://www.facebook.com/LiebherrConstruction)