

Crawler Dozer

PR 726

Litronic®

Generation

8

Operating Weight

17.500 – 20.800 kg

Engine Output

125 kW / 170 HP

Stage V / Tier 4f



LIEBHERR

News

Lower emission levels in accordance with most recent legislation

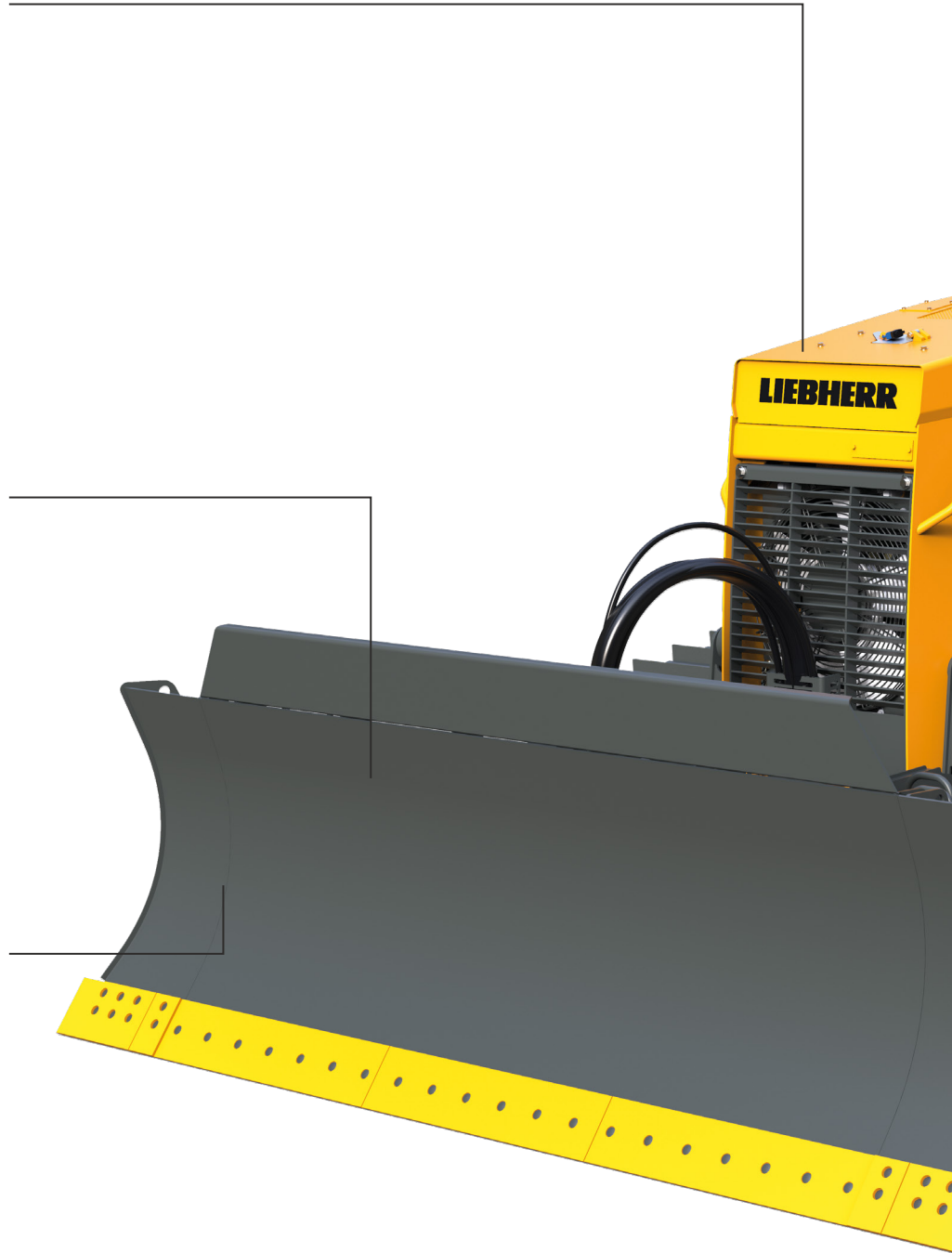
- EVO-Generation high traction engine from Liebherr with increased rated output
- Exhaust gas aftertreatment for EU Stage V with SCR filter
- Proven components mean long service life with a minimum of maintenance interventions
- The hydrostatic propulsion drive with active hydraulic line adjustment ensures optimal pushing performance in demanding situations

Increased productivity with the aid of driver assistance systems

- Automatic **Free Grade & Definition Grade** blade guidance fitted as standard (see following pages)
- **3D Grade** grading system, ex-works ready for use, as well as pre-installation kits from the major system suppliers available as options (see following pages)
- The assistance systems help the driver to work more effectively and create clean grades quickly

New 6-way blade for greater productivity and savings in time when transporting the machine

- The wider 6-way blades increase the pushing volume and levels one additional strip per cycle
- The fold-back edges with locking pins enable quick conversion for transport
- Optimised power take-up through central ball pivots particularly with demanding tasks
- Mechanical, motion and electronic systems create the best conditions to give impressive levelling work





Optimum operator comfort for fatigue-free working in the new cabin

- The ergonomic joysticks, the new Auto Lift function for the rear ripper and the hanging inch pedal can be individually adjusted to suit the driver
- The new 9" touch display is intuitive to use and is notable for its significantly expanded functionality
- The self-regulating automatic climate control offers a pleasant interior climate and facilitates efficient working

Improved sound insulation in the cabin

- Hydro-elastic bearings dampen the transmission of structure-borne noise from the base machine to the cabin
- The rigid connection through the pivot points to the base machine for tilting the cabin (for maintenance purposes) is decoupled for operation
- Powertrain components optimised for sound and vibration absorption measures reduce disturbing frequencies for the driver

Adjustment to the individual driver through electronically controlled operating hydraulics

- The response behaviour of all directions of movement of the front and rear equipment can be individually adjusted to the driver and to maximize ease of use
- New functions: Blade shake feature & lifting the ripper in the park position

Assistance Systems



Intuitive 9-inch touch display

- An overview of all key machine parameters
- Wide range of driver-specific settings:
 - Response behaviour of working hydraulics
 - Response behaviour drive hydraulics
 - Automatic eco mode speed reduction and engine shutdown
- Liebherr Operator Assistance control platform Systems:
 - Liebherr Indicate: Real-time 3D position display
 - Free Grade: Active support for fine grading
 - Definition Grade: Creation of defined 2D surfaces

Free Grade



Free Grade – blade stabilization

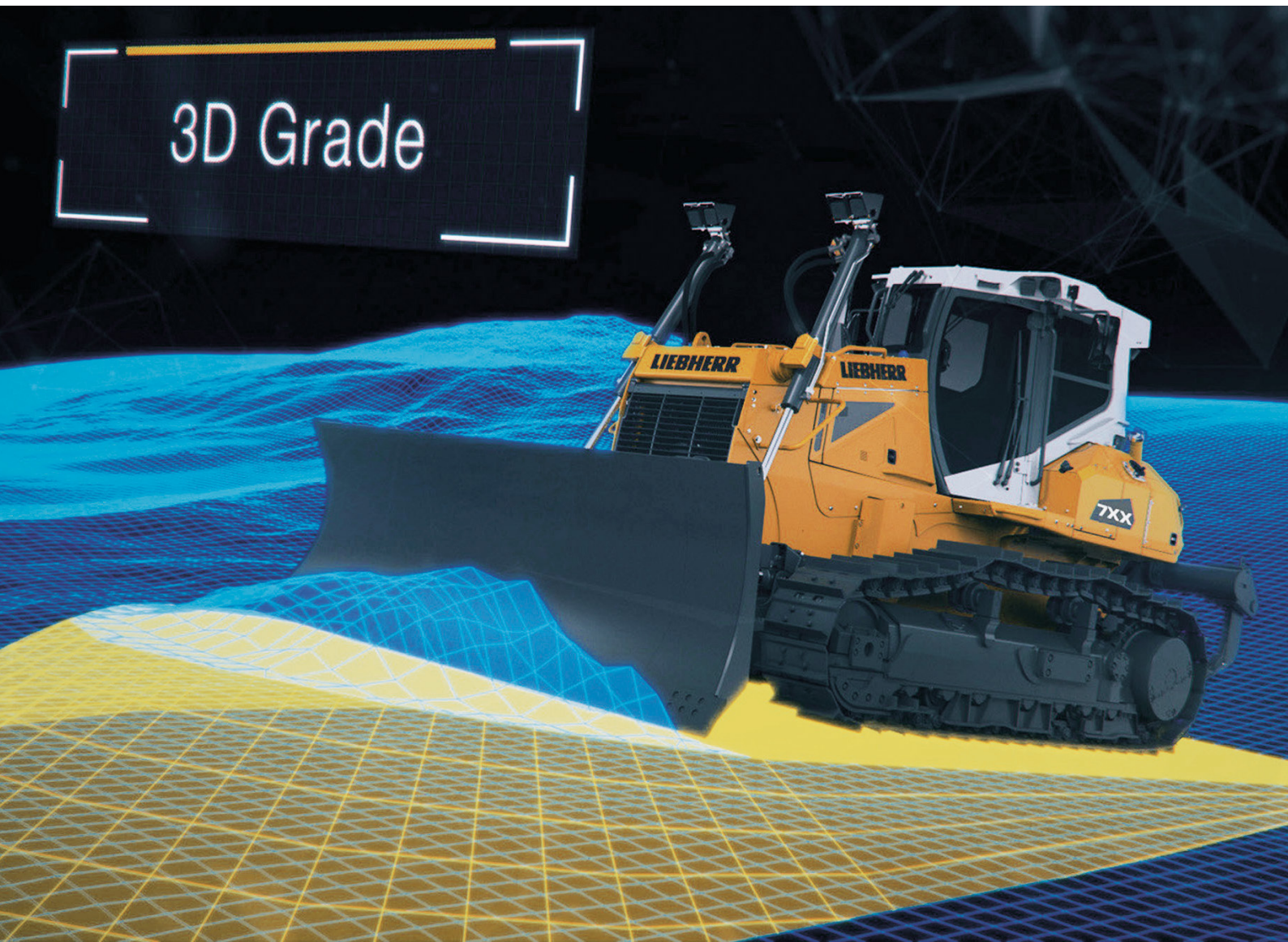
- Creating a level formation: flat surfaces, ramps, dams, etc.
- Active blade stabilisation (longitudinal/transverse tilt) when levelling
- Increased productivity and simultaneous time saving
- Improved quality for newer drivers, stress-free comfort for experienced drivers
- Increased site safety as more attention given to what is going on around the machine

Assistance Systems



Definition Grade – blade inclination control

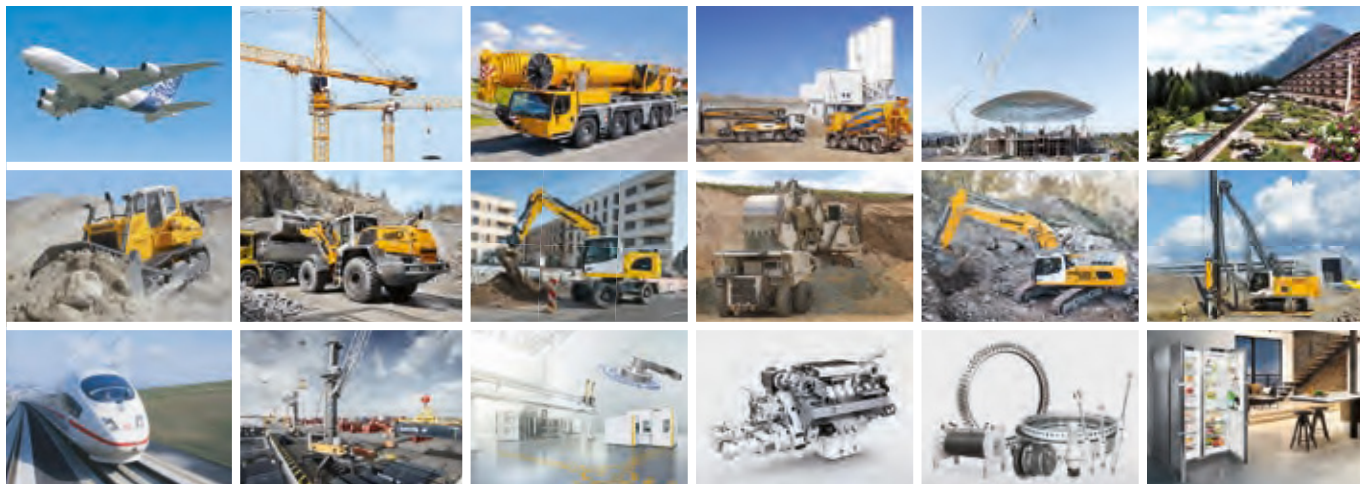
- Basic modelling of 2D surfaces
- Automatic/active position control of the blade at a specified target angle
- Operation without additional equipment, such as GNSS receiver, base station etc.
- Operation regardless of local conditions, satellite reception, Internet, etc.
- Cost savings (no additional equipment or hardware required)
- Increased productivity and simultaneous time saving
- Improved quality for newer drivers, stress-free comfort for experienced drivers
- Increased site safety as more attention given to what is going on around the machine



3D Grade – factory-fitted roof-mounted grading system (Topcon)

- Modelling of complex 3D terrain models
- Automated 6-way blade control
- Exact positioning of the blade relative to a target profile (terrain model)
- Theft protection, no mounting or dismantling mast, available ex works, smart/intelligent
- Full integration with “construction site 4.0”

The Liebherr group of companies



Great variety of products

The Liebherr Group is one of the largest construction equipment manufacturers in the world. Liebherr products and services are designed for purpose and also highly acclaimed in many other business sectors. These include refrigerators and freezers, equipment for aviation and rail transport, machine tools and cranes for the maritime sector.

Maximum customer benefit

A complete range of models in a variety of equipment versions are offered in all product sectors. Recognised for mature technology and renowned quality, Liebherr products offer the greatest operational benefits.

Technological expertise

In order to meet the high demands placed on the quality of its products, Liebherr attaches great importance to mastering core competencies itself. That is why important components, such as the complete drive and control technology for construction machines, come from our own development and production departments.

Global and independent

The Liebherr family business was founded in 1949 by Hans Liebherr. Since then, the company has grown into an industrial group with more than 41,000 employees working in over 130 companies and across all continents. The group's parent company is Liebherr-International AG in Bulle, Switzerland, whose shareholders are exclusively members of the Liebherr family.

www.liebherr.com

Liebherr-Werk Telfs GmbH

Hans Liebherr-Straße 35, A-6410 Telfs
☎ +43 50809 6-100, Fax +43 50809 6-7772
www.liebherr.com, E-Mail: lwt.marketing@liebherr.com
www.facebook.com/LiebherrConstruction