

Product Information

Assistance Systems for Wheel Loaders



LIEBHERR

Adaptive Working Lighting	4
Active Personnel Detection at the Rear	5
Roof Camera for Front Area Monitoring	6
Integral Tyre Pressure Monitoring System	7
Joystick Steering	8
Operator's Cab Without Steering Wheel / Steering Column – Joystick Steering Only	9
Liebherr Key With Remote Control Incl. Coming Home / Leaving Home Function	10
Skyview 360°	11
Liebherr Weighing Device With "Truck Payload Assist"	12
Equipment	13
Increased Safety for Enhanced Performance	14

Intelligent Assistance Systems for Liebherr Wheel Loaders

With the new, intelligent assistance systems, Liebherr offers comprehensive solutions that optimise safety and comfort and enhance performance in day-to-day wheel loader operation. All systems have been developed by Liebherr and are therefore fully integrated into the machine control. The useful assistance systems and their intuitive control and easy handling enable safe, efficient and low stress machine operation for the operator. This maximises operator comfort and results in higher productivity. The Liebherr assistance systems are the perfect solution for economical wheel loader use.

Adaptive Working Lighting



Available as Option for L 526 – L 586 XPower®

Adaptive working lighting is an intelligent light control system. In the dark and during night-time operation, safety and convenience are significantly increased. With the aid of modern light sensors, the light output of the LED headlights is automatically adjusted to the position of the lift arms, the working attachment and the wheel loader articulation angle. This enables homogeneous illumination of the entire operating area. An additional headlight on the front section and the automatic dimming of the front working headlights also ensure ideal light conditions and a high level of safety. Dazzling, reflections and shadows are reduced enabling the operator to work comfortably and with reduced fatigue. This results in higher levels of performance and operating efficiency.

Active Personnel Detection at the Rear



Available as Option for L 550 XPower® – L 586 XPower®

The active personnel detection system monitors the rear area of the wheel loader and automatically warns the operator of dangers by means of a visual symbol on the display and an acoustic signal. With the aid of the latest camera technology, the system distinguishes between people and objects without the people needing to be equipped with transponders or sensors. This makes the Liebherr system one of the safest currently on the market.

If a person is located in the rear shunting area of the wheel loader, the intelligent system alerts the operator earlier than in the case of stationary objects. This means that unnecessary warning signals are avoided and the strain on the operator is reduced. This precise warning to avoid personal injury lowers the risk of accident and enables safe and comfortable work.

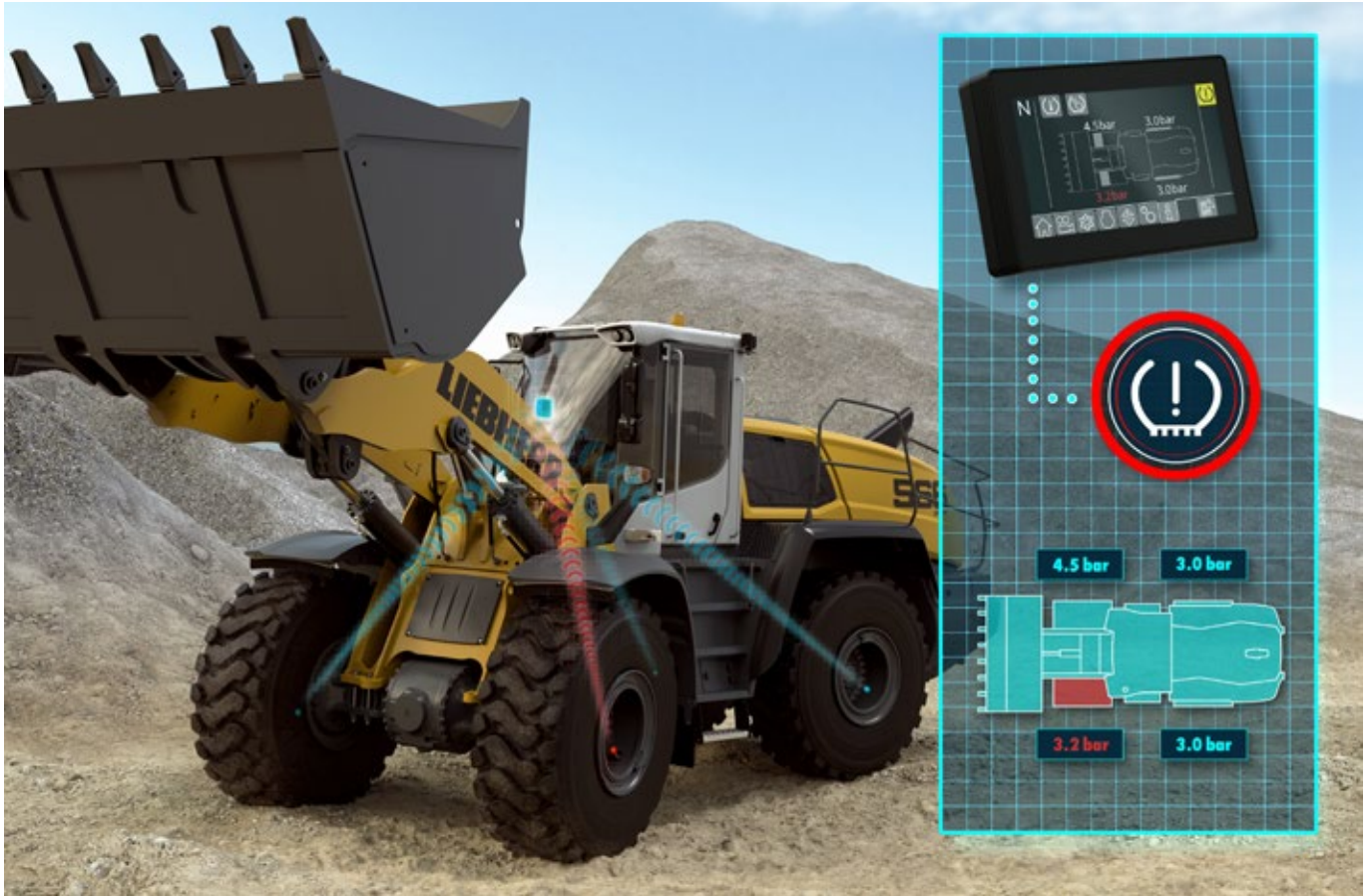
Roof Camera for Front Area Monitoring



Available as Option for L 526 – L 586 XPower®

The roof camera offers the operator an extended field of vision and excellent visibility on the upper operating area of the wheel loader. Particularly where operations involve the use of large attachments, it ensures better and faster recognition of people and obstacles in front of the machine. The operator can immediately detect possible sources of danger on a separate display in the operator's cab. This enhances safety and protects against accidents resulting in personal injury. In addition, the improved view into high containers, trucks and funnels enables more efficient loading and feeding and thereby enhances productivity.

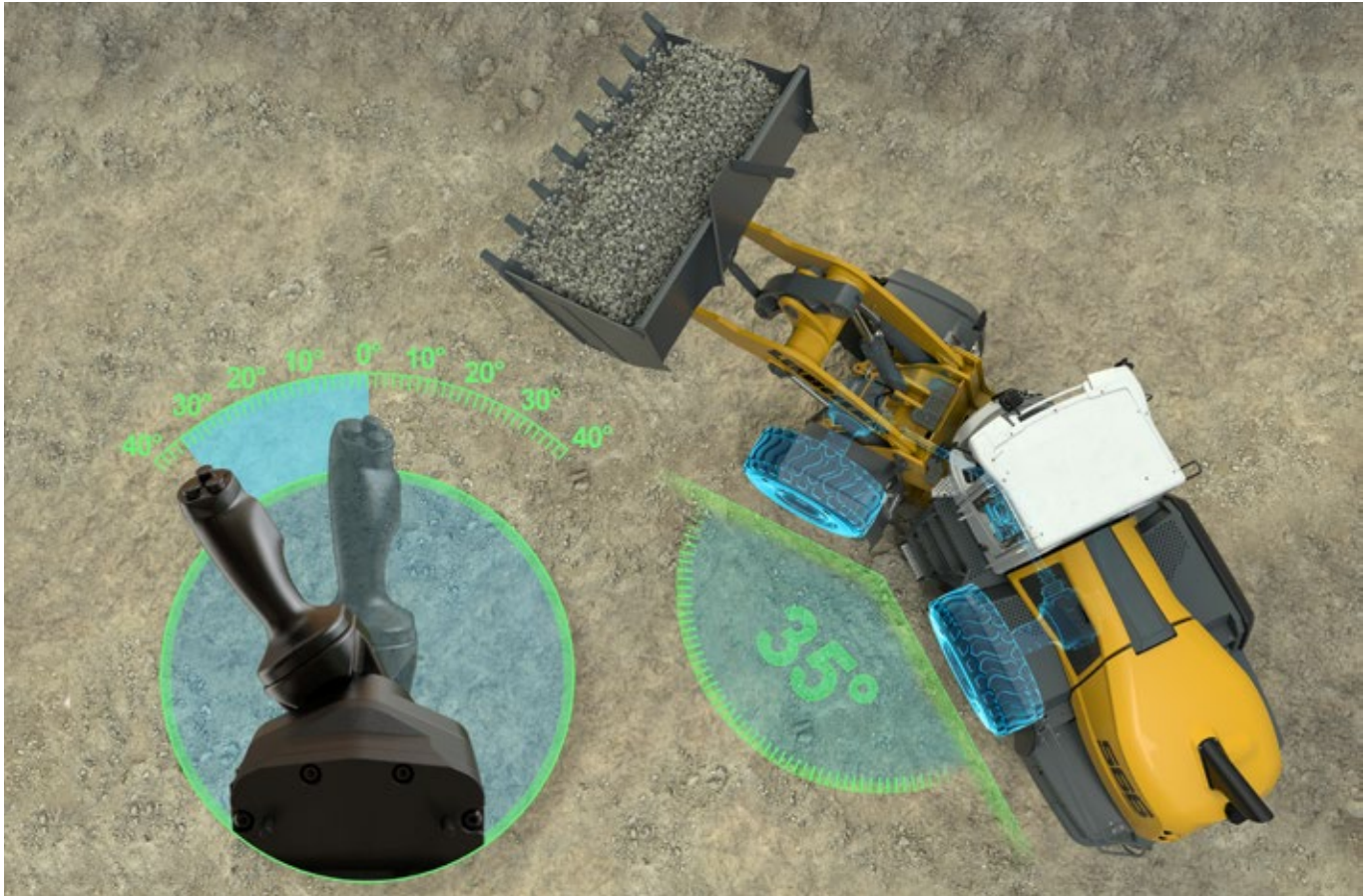
Integral Tyre Pressure Monitoring System



Available as Option for L 550 XPower® – L 586 XPower®

The sensor-supported, integral tyre pressure monitoring system enables early detection of low tyre pressure. With the aid of sensors that are installed on the tyre valves and protected from damage, the system records the tyre pressure and transmits these values via wireless connection to the display in the operator's cab. If there are deviations, the operator receives an automatic warning notification on the display. This enables fast repair of any damage and lengthens the lifetime of the tyres. Optimal tyre pressure also ensures excellent manoeuvrability as well as the best levels of machine stability and robustness. Comfortable and safe working enhances performance and productivity.

Joystick Steering



Available as Option for L 526 – L 586 XPower®

The optional joystick steering integrated into the operator's seat is a new, innovative and improved steering system. All the machine's working and driving functions can be controlled precisely and with a high degree of sensitivity. Particularly in the case of short load cycles in particular, minimising required steering movements makes work less fatiguing and more productive. The direction of the joystick corresponds exactly to the respective articulation angle of the wheel loader. This enables intuitive vehicle steering and enables the wheel loader to be steered with ease, even when reversing. The joystick also gives feedback about the forces affecting steering. This makes precise and safe operation possible at any speed and on all terrains.

Operator's Cab Without Steering Wheel/ Steering Column – Joystick Steering Only



Available as Option for L 566 XPower® – L 586 XPower®

For L 566 XPower® – L 586 XPower®, the operator's cab is also optionally available without steering wheel and column with joystick steering only. The absence of the steering wheel and column in the operator's cab provides more space and improved visibility of the working attachment and operating area. This creates optimal conditions for the operator to work comfortably and productively. In addition, eliminating the need for the operator to move their hands between the steering unit and the control unit increases safety and comfort.

Liebherr Key With Remote Control Incl. Coming Home / Leaving Home Function



Available as Option for L 550 XPower® – L 586 XPower®

The optional Liebherr key with remote control, including coming home / leaving home function, provides safe and comfortable operation of the machine. It enables the operator's door to be locked, unlocked and automatically opened remotely. In addition, the working headlights installed on the sides activate themselves to illuminate the area immediately around the machine and ensure that the operator can get on and off the machine safely and quickly. In the dark and during night-time work, safety is considerably increased, time is saved and productivity is enhanced.

Skyview 360°



Available as Option for L 526 – L 586 XPower®

Skyview offers the operator a 360-degree view around the wheel loader at all times by means of four additional cameras. The images they capture are combined to create a bird's-eye view of the machine's whole environment that is shown on a separate display in the operator's cab. The operator can therefore quickly see all danger areas and blind spots. This increases safety and productivity.

The "Skyview 360°" and "Active personnel detection at the rear" assistance systems can be combined. They offer the operator the best possible monitoring of the machine's entire environment for safe and comfortable operation.

Liebherr Weighing Device With “Truck Payload Assist”





Available as Option for L 550 XPower® – L 586 XPower®

The Liebherr weighing device serves as control scales and functions automatically and intelligently with dynamic weighing area adjustment. The weighing extends across a large lifting range without a specific lifting height having to be reached. This means that the operator can concentrate on their work without interruption, which significantly increases productivity. The weighing data is displayed clearly on the display in the operator's cab. This enables the operator to work comfortably and efficiently.


In addition, the operator can enter the desired loading weight into the display. The “Truck Payload Assist” then recommends the optimal target weight for individual bucket loads and the required loading cycles for an even loading process. This ensures precise and efficient loading of trucks, dumpers and containers that minimises impact on the machine. Time and costs are saved with productivity simultaneously enhanced. For even more efficient machine operation, the weighing data can also be evaluated by LiDAT.


Equipment

 Basic Wheel Loader	L 526	L 538	L 546	L 550	L 556	L 566	L 576	L 580	L 586
Liebherr weighing device with "Truck Payload Assist" (cannot be calibrated)	-	-	-	+	+	+	+	+	+

 Safety	L 526	L 538	L 546	L 550	L 556	L 566	L 576	L 580	L 586
Active personnel detection at the rear	-	-	-	+	+	+	+	+	+
Roof camera for front area monitoring (with Liebherr camera via Liebherr display)	+	+	+	+	+	+	+	+	+
Skyview 360°	+	+	+	+	+	+	+	+	+

- = Standard
- + = Option
- = not available

 Operator's Cab	L 526	L 538	L 546	L 550	L 556	L 566	L 576	L 580	L 586
Adaptive working lighting	+	+	+	+	+	+	+	+	+
Operator's cab without steering wheel / steering column (not available as street legal) – Joystick steering only	-	-	-	-	-	+	+	+	+
Integral tyre pressure monitoring system	-	-	-	+	+	+	+	+	+
Joystick steering	+	+	+	+	+	+	+	+	+
Liebherr key with remote control incl. Coming Home / Leaving Home function	-	-	-	+	+	+	+	+	+

 Equipment	L 526	L 538	L 546	L 550	L 556	L 566	L 576	L 580	L 586
Visualisation of the equipment position	-	-	-	•	•	•	•	•	•

You can find further information here on "Assistance systems for wheel loaders":



Increased Safety for Enhanced Performance

Operating Safety

- + Increased performance and operating efficiency
 - + Maximum operator comfort for greater productivity
 - + Focused operator work is supported
 - + Easy and safe operation
 - + Putting machine into service comfortable and safe
-
- ✓ Adaptive working lighting
 - ✓ Roof camera for front area monitoring
 - ✓ Skyview 360°
 - ✓ Active personnel detection at the rear
 - ✓ Liebherr weighing device with "Truck Payload Assist"
 - ✓ Joystick steering
 - ✓ Operator's cab without steering wheel / steering column – Joystick steering only
 - ✓ Liebherr key with remote control incl. Coming Home / Leaving Home function

Safe and Versatile Usage

- + High performance
 - + Maximum productivity
 - + Comfortable and safe working
 - + Time savings in daily work
 - + Efficient and cost-optimised use
 - + High machine availability
-
- ✓ Adaptive working lighting
 - ✓ Roof camera for front area monitoring
 - ✓ Skyview 360°
 - ✓ Liebherr weighing device with "Truck Payload Assist"
 - ✓ Integral tyre pressure monitoring system





Personnel Safety

- + Excellent all-round visibility
- + Optimal view of operating area and working attachment
- + Comfortable and safe access for productive working

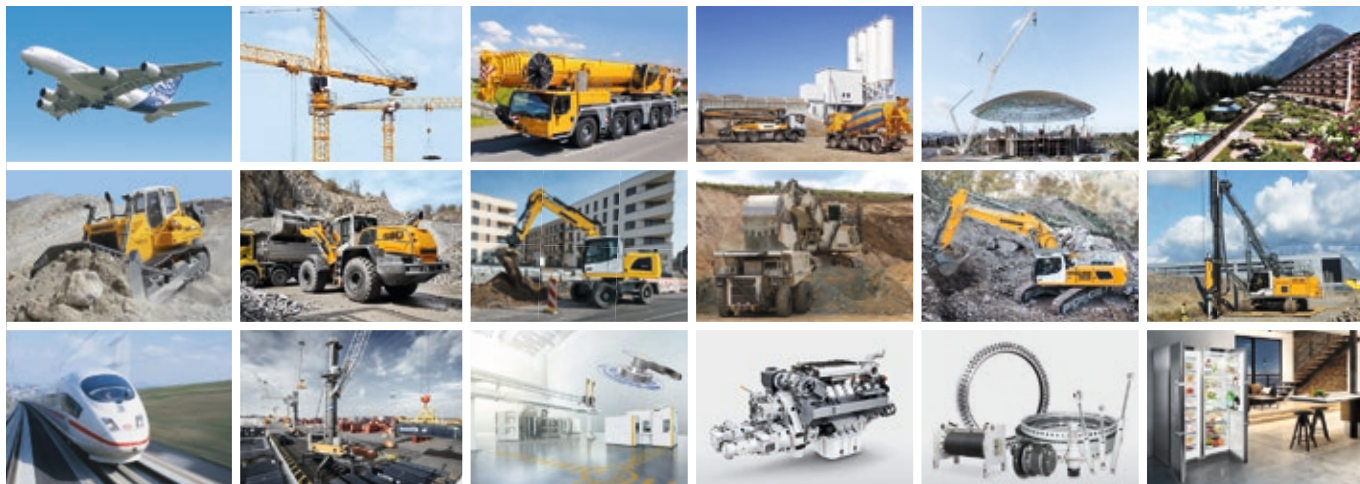
- ✓ Skyview 360°
- ✓ Active personnel detection at the rear
- ✓ Roof camera for front area monitoring
- ✓ Liebherr key with remote control incl. Coming Home / Leaving Home Function

Safety and Stability

- + Practically no tyre wear
- + Maximum stability and safety on all terrains
- + Comfortable and safe driving performance

- ✓ Integral tyre pressure monitoring system

The Liebherr Group of Companies



Wide Product Range

The Liebherr Group is one of the largest construction equipment manufacturers in the world. Liebherr's high-value products and services enjoy a high reputation in many other fields. The wide range includes domestic appliances, aerospace and transportation systems, machine tools and maritime cranes.

Exceptional Customer Benefit

Every product line provides a complete range of models in many different versions. With both their technical excellence and acknowledged quality, Liebherr products offer a maximum of customer benefits in practical applications.

State-of-the-art Technology

To provide consistent, top quality products, Liebherr attaches great importance to each product area, its components and core technologies. Important modules and components are developed and manufactured in-house, for instance the entire drive and control technology for construction equipment.

Worldwide and Independent

Hans Liebherr founded the Liebherr family company in 1949. Since then, the family business has steadily grown to a group of more than 130 companies with nearly 44,000 employees located on all continents. The corporate headquarters of the Group is Liebherr-International AG in Bulle, Switzerland. The Liebherr family is the sole owner of the company.

www.liebherr.com